



iTadweer
آي تدوير

Caring Community, Sustainable Future.

Problem

\$2.6 B

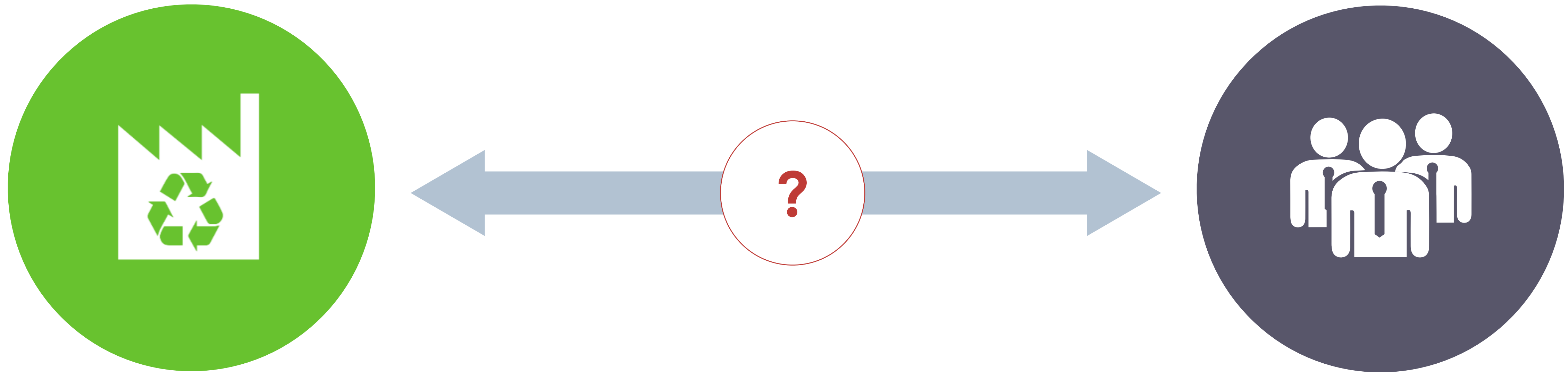
Wasted annually in GCC



\$2.6 Billion worth of recyclables are dumped into landfills every single year!



Problem

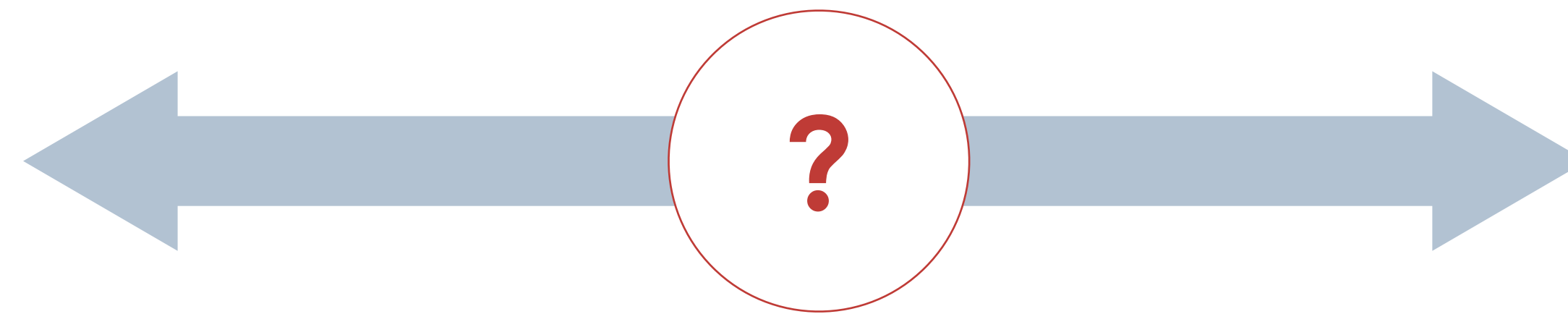


No communication tool

On one hand, corporates and households -main contributors of annual waste generation- don't have a proper communication tool with recycling companies.



Problem



No recycling system

Lost opportunities

Expensive operations

No communication tool

On the other hand, recycling companies had no proper system, lost many opportunities, and suffered from high operational costs. While not having a proper tool to maximize waste input up to their capacity.



Solution



iTadweer is a cloud-based platform that makes recycling easier,

We connect recycling companies
to corporates (**stage 1**) & households (**stage 2**).



Solution

A smartphone displaying a collection request form. The form is in Arabic and English. It shows 'Step 1/3 الخطوة' at the top. The first section is 'Address type | نوع العنوان' with two radio button options: 'Office / مكتب' (selected) and 'House / منزل'. The second section is 'Address Details | تفاصيل العنوان' with a sub-section 'Address | العنوان' containing four input fields: 'Apartment or Office No | شقة أو مكتب', 'Building | مبنى', 'Road | شارع', and 'Block | مجمع'. A green 'NEXT STEP' button is at the bottom. At the very bottom, it says 'Follow us on Instagram: iTadweer'. Blue arrows point from the form to the left and right icons.

Solution is focused -at this stage- to replace phone calls with a simple User Interface for collection requests.



Effective Workflow Management

Features of our cloud-based platform

The screenshot displays a web application interface for Waste Management. At the top, a green navigation bar contains the title 'Waste Management' and several menu items: 'Waste Collections', 'Trips and Routing', 'Weighing Dashboard', 'Weighting Orders', and 'Configuration'. On the right side of the navigation bar, there are icons for a search function, a chat bubble, and a user profile labeled 'Administrator'. Below the navigation bar, the main content area is titled 'Assigned Requests' and includes a search input field. A 'Create' button is located on the left side of this section. Below the search field, there are controls for 'Filters', 'Group By', and 'Favorites'. The main area features a Kanban-style workflow board with four columns: 'New', 'Scheduled', 'Pending Collection', and 'Fulfilled'. Each column has a plus sign icon. The 'Pending Collection' column is currently active and displays two items: 'Zain Bahrain S0015' with a timestamp of '06/29/2018 15:04:57' and a camera icon, and 'Tree Projects S0009' with a timestamp of '02/28/2018 10:22:09' and a person icon.

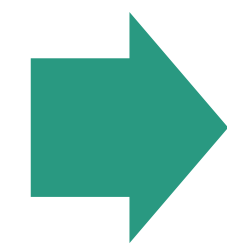
The recycling companies' user interface utilizes drag-and-drop features.

Waste Collection Management Workflow

The screenshot shows a software interface for 'Waste Management' with a 'Waste Collections' dropdown menu. The user is identified as 'IKEA Dhahran Manager'. The main area is titled 'Assigned Requests' and includes a search bar, 'Create', and 'Print' buttons. The workflow is organized into columns: Draft, New/Submitted, Approved, Scheduled, and Fulfilled. Each column has a plus sign to expand it. The 'New/Submitted' column contains two requests from 'IKEA Bahrain' with IDs S0005 and S0003, and timestamps. The 'Scheduled' column contains two requests from 'IKEA Bahrain' with IDs S0004 and S0002, and timestamps. A 'CANCELLED (0)' column is also visible on the right.

Draft	New/Submitted	Approved	Scheduled	Fulfilled	CANCELLED (0)
	<ul style="list-style-type: none">IKEA Bahrain S0005 23-12-2019 23:52:32IKEA Bahrain S0003 19-12-2019 14:29:28		<ul style="list-style-type: none">IKEA Bahrain S0004 23-12-2019 22:53:53IKEA Bahrain S0002 19-12-2019 01:16:41		

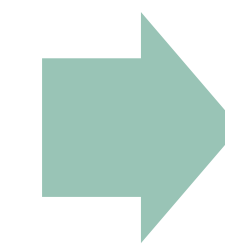
Received
Collection
Request



Approve,
Schedule,
and Route



Visit site,
Receive, and
Enter Weight

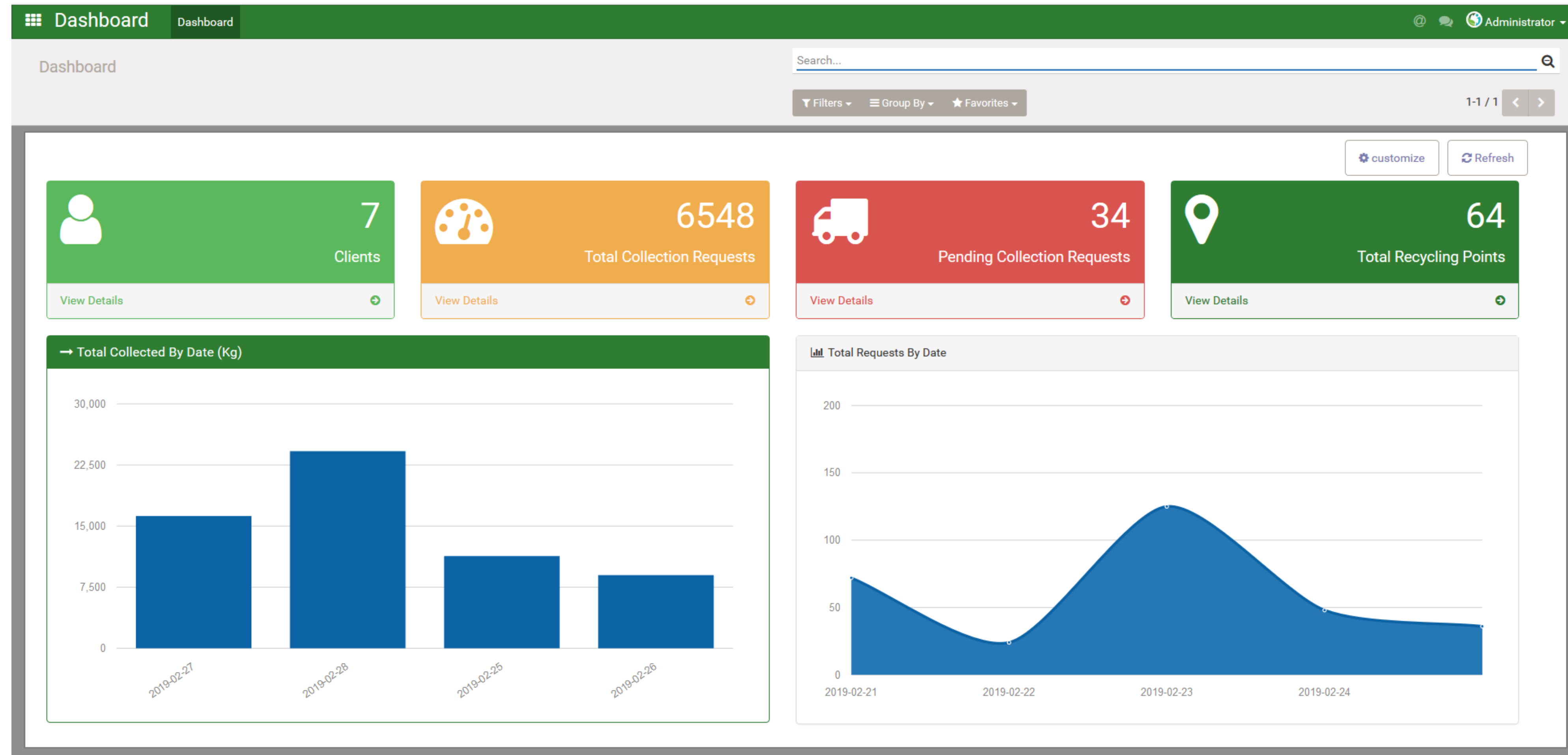


Monitor &
Report



Effective Monitoring & Dashboards

Features of our cloud-based platform



The dashboard is intuitive & focused on the KPIs which recycling companies need, and can be accessed from any device connected to the internet.

Smart Routing

Features of our cloud-based platform

Open in Google Maps

Rd No 4306, المنامة, البحرين A

13.2 كم. حوالي 22 دقيقة

1. الاتجاه نحو شمال شرق مباشرة صوب Rd No 4306 0.2 كم
2. الاتجاه يميناً إلى Rd No 4306 0.4 كم
3. المتابعة في خط مستقيم 0.3 كم
4. الاتجاه نحو اليسار إلى شارع الفاتح 9 م
5. الاتجاه نحو اليسار إلى شارع الفاتح 0.2 كم
6. تابع جهة اليمين لمواصله الاتجاه نحو شارع الفاتح 0.1 كم
7. تابع السير في شارع الفاتح المتابعة في Al Fatih Hwy 4.8 كم
8. الاتجاه نحو المخرج إلى شارع الملك فيصل 0.6 كم
9. إلى اليسار قليلاً إلى شارع الملك فيصل 3.5 كم
10. تابع السير في شارع الشيخ خليفة بن سلمان 1.2 كم
11. تابع جهة اليمين للاستمرار في شارع الملك عبدالله بن الحسين 1.5 كم
12. عند الدوّار، عليك الاتجاه نحو المخرج الثالث إلى طريق الملك محمد السادس 0.4 كم
13. الاتجاه نحو اليمين 21 م

طريق الملك محمد السادس، جدحفص، البحرين B

5.4 كم. حوالي 10 دقيقة

1. الاتجاه نحو الشرق مباشرة صوب طريق الملك 21 م

The smart routing raises efficiency, so recycling companies can reach more clients in less time.

Revenue Models



20% Commission

To cover operations expenses, a business model is charging recycling company a 20% commission, on each collection request that is received through our platform.

Additionally:

**Monthly subscriptions are charged for using the platform
And Sponsorships are offered for various entities to support the initiative**



Targeted Market

Bahrain

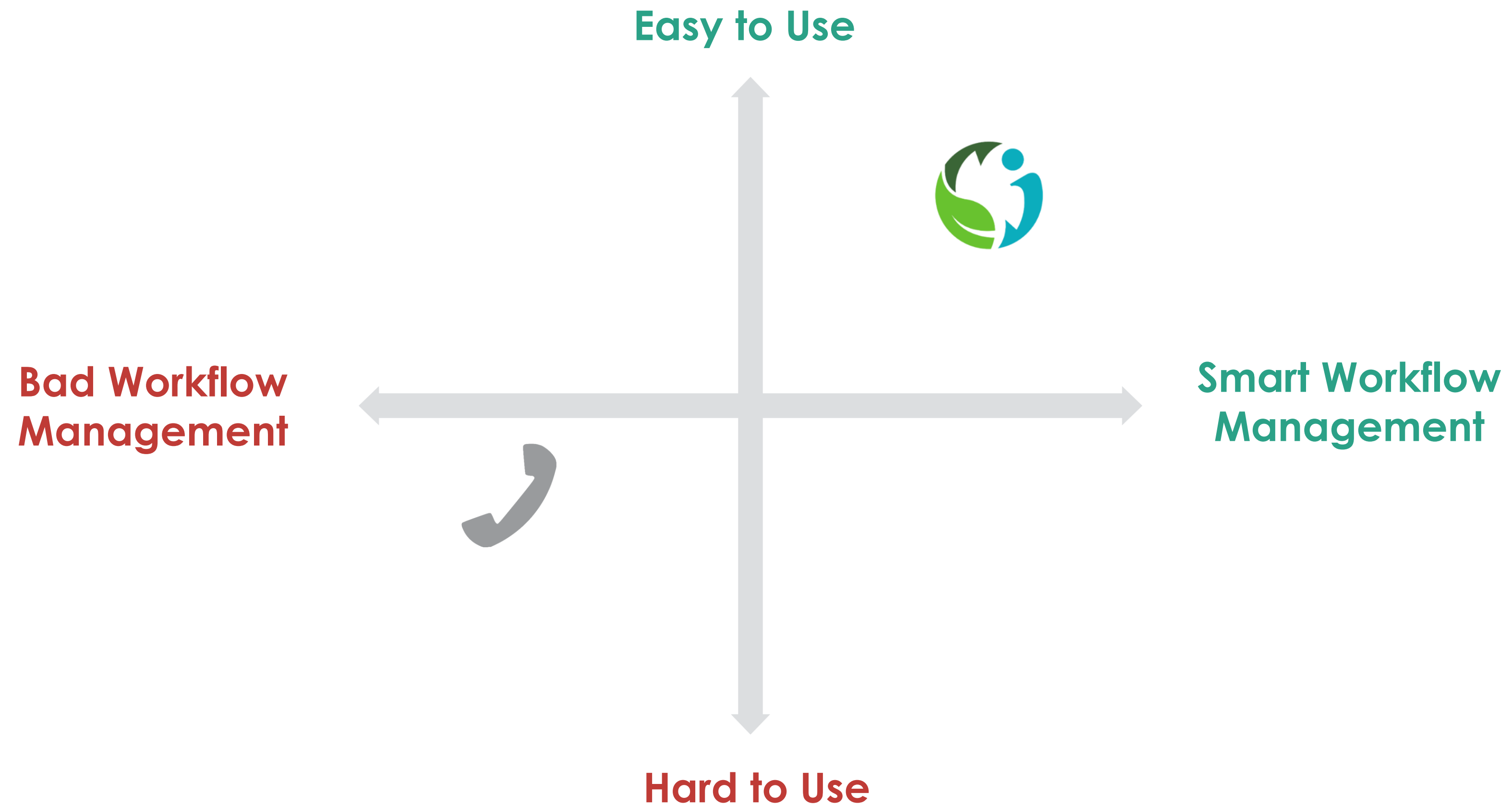
10,000 Corporates

GCC

300,000 Corporates

We target 10,000 corporates in Bahrain & 300,000 corporates in GCC.

Competition



Compared to our digitized collection workflow,
our only competition is the current traditional way of communication with recycling companies.

Strategic Goals



HRH the Crown Prince and Prime Minister:
“ Bahrain is responsible for only 0.07% of global emissions but will lead by example ”

-  Bahrain commits to reach net zero by 2060
-  Bahrain will reduce emissions by 30% by 2035
-  Bahrain will double its use of renewables by 2035 from its COP21 target
-  30% Doubling trees
Quadrupling mangroves

@BahrainCPNews 1 2 3



NATIONAL GOALS:

Bahrain's net-zero emissions target (2060) & Economic Vision 2030



INTERNATIONAL GOALS

ESG: Environment, Social and Governance criteria & SDGs



Future Strategic Partnerships



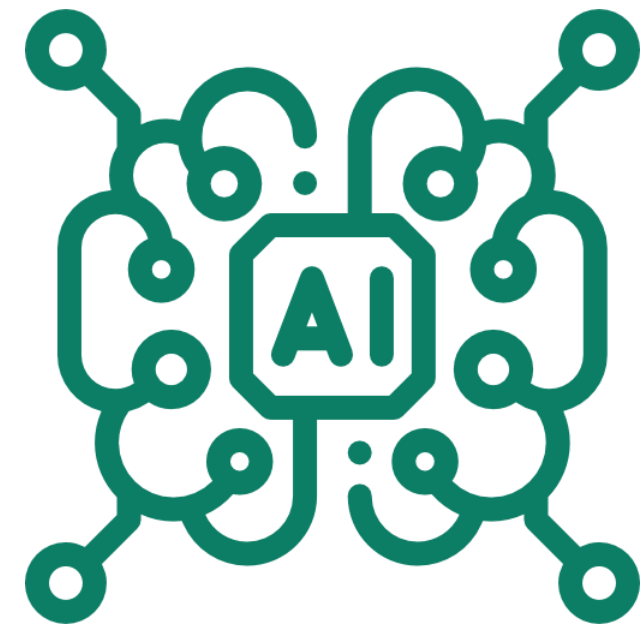
Saudi Arabia targets net zero carbon by 2060



PIF-owned SIRC targets zero-waste 'Circular Economy' by 2035

**The platform solution contributes to different government's strategic goals in GCC.
Our next step is to connect environment initiatives through GCC countries' strategic partnerships.**

The Future



AI (Artificial Intelligence) is planned to be a huge contributor to the solution.

Households are the main target in the next phase.

The Founders



JAFFER AL HAMAD - FOUNDER

B.Sc. in Accounting & Finance

Finance & Project Manager

8+ years of experience in: Finance, IT Project Management, and Marketing

Worked ERP Systems & Online Marketplaces in Various Sectors across GCC



S. YOUSIF HUSAIN – CO-FOUNDER

Marketing Lead & Social Media Specialist

Wide experience in creative agency projects and content strategy

15+ years in media & content, photography, copyrighting, and video editing

The Investment

Ask:

\$99,000

In exchange of 5.5% equity

90% to hire 4 Key Members

(Sales & Development Team)

& 10% to cover technical costs

(System hosting and maintenance)



iTadweer
آي تدوير

Be Part of The Change!

كُن جزءاً من التغيير!



iTadweer.com



iTadweer